

ESDEC

INNOVATIVE MOUNTING SYSTEMS



**RELIABLE AND
QUICK INSTALLATION
ON PITCHED ROOFS**

CLICKFIT

EVO

TILED ROOF

www.esdec.com

TILED ROOF

Mounting solar panels. That can be done smarter, faster and easier. Our mounting systems consist of lightweight, heavy components that simplify the installation of solar modules. This saves time, space and energy.

CLICKFIT EVO; SIMPLE AND FAST

The ClickFit EVO system has a smart click connection and consists of only four components, regardless of the type of sloping roof. This makes installation extra easy as you save in tools, number of actions and time.

Fastening of choice; clamps or screws

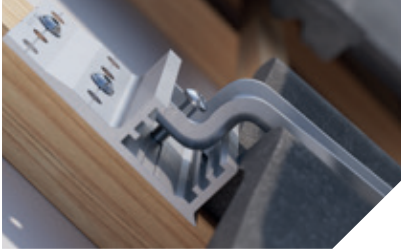
For the tiled roof, Esdec offers several solutions so that you can always choose the product which best suits your roof. The universal roof hook allows easy installation without drilling into the roof structure.

In some situations, you still prefer screws. Because this is your preference in terms of fastening; or because the situation demands it. Then choose the ClickFit EVO Truss Hook or the Roof Hook Pro. These hooks have a wider top plate, which you screw onto a truss. This gives you flexibility in positioning and screwing the roof hook.



WIDE ADJUSTABILITY

The Roof hook Pro can be adjusted both horizontally and in 3 heights. The Universal roof hook is infinitely adjustable in height. This allows the hook to easily connect to all common roof tile/pan slat combinations.



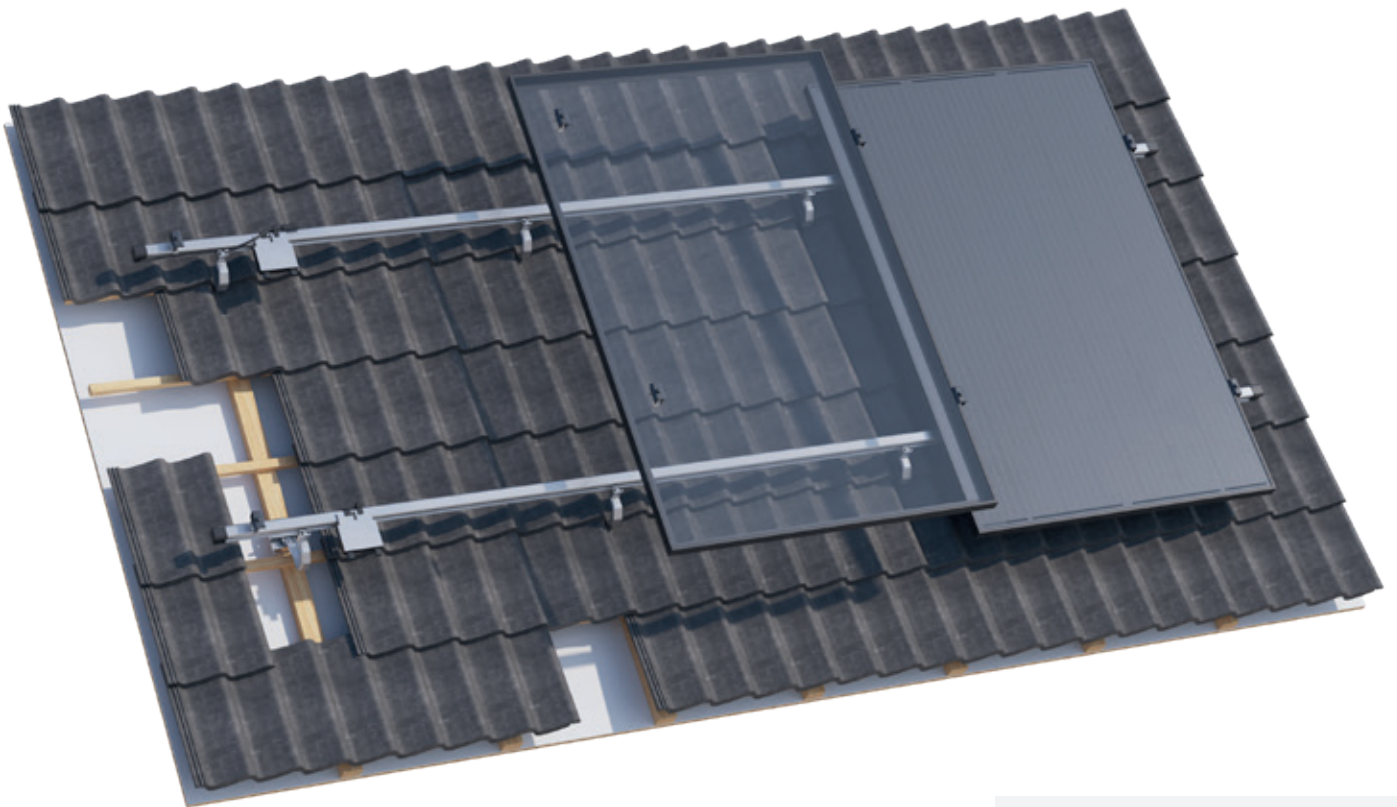
EASY CLICK CONNECTION

De dakhaken in de ClickFit EVO-lijn have a selfaligning click connection. As a result, the mounting rail is always quick and easy to assemble.



HOOKS OR SCREWS

De ClickFit EVO roof hook is available in several variations. Hooks, screws, the choice is yours!



ALWAYS THE RIGHT MEASUREMENTS

The universal module clamp en de 60 mm mid- and end clamp are adjustable in height and therefore suitable for solar panels with a frame thickness between 30 and 50 mm.



INTEGRATED CABLE MANAGEMENT

Cables and connectors are neatly and securely held in place in the roof hook. You can also simply click the optimizer or microinverter onto the rail with the MLPE clip.



THE 4 COMPONENTS OF CL

1. ROOF HOOK

Fastening of your choice, hooks or screws



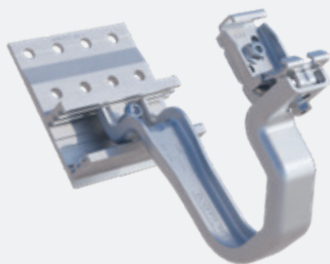
Universal roof hook / Universal roof hook LT

- Infinitely adjustable in height
- Fastening by clamps
- Vertical and horizontal mounting possible by self-aligning, rotating click connection
- Integrated cable management
- The LT variant is also resistant to extra-cold installation temperatures (-5°C)
- Magnelis coating for additional corrosion protection
- Maximum tile overlap 140 mm



Truss hook

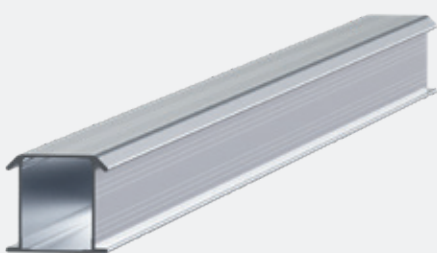
- Fastening by screwing to the roof structure
- Continuously height-adjustable
- Vertical and horizontal mounting possible through self-aligning, rotatable click connection
- Integrated cable management
- Magnelis coating for additional corrosion protection
- Maximum tile overlap 140 mm



Roof hook Pro

- Securely attached to rafters with screws
- Horizontally adjustable
- 3 x vertically adjustable (36, 44 and 52 mm)
- 5 mm distance between tile and hook
- Snow and wind load resistant
- Self-aligning click connection
- Magnelis coating for additional corrosion protection
- Maximum tile overlap 90 mm

2. MOUNTING RAIL



Mounting rail

- Light
- Strong
- Clicking instead of screwing

CLICKFIT EVO

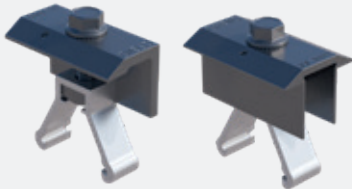
3. UNIVERSAL MODULE CLAMPS

Esdec offers a choice of universal 35 mm clamps and 60 mm clamps. Module clamps are height-adjustable and therefore suitable for solar panels with a frame thickness between 30 and 50 mm. The clamps are assembled as standard and include equalisation of the solar panels.



Universal Module clamps

- Can be used as middle and end clamps in combination with the end cap.
- Available in grey and black



60 mm Middle- and end clamp

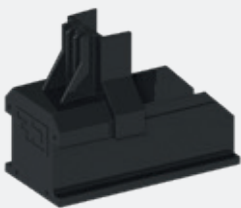
- End clamp can be combined with the end cap without clamp support.
- Available in black

4. END CAP

For a stylish and wind-tight finish, in grey and black.

Elongated end cap

- Supports the module clamp



End cap



MyEsdec

With just one account access to all the tools and services Esdec has to offer, that's MyEsdec. An online portal that provides access to existing tools such as the Esdec Calculator, the Esdec Academy, and our latest app Esdec OnSite. To make the required knowledge and skills accessible to everyone, the use of MyEsdec is free.

Go to www.esdec.com/en/my-esdec and discover the convenience.



Warranty

ClickFit EVO meets all of the requirements and standards that currently apply. ClickFit EVO comes with a unique 20-year warranty, thus ensuring the system's quality.

- ✓ Use of premium materials
- ✓ Extensively tested
- ✓ 20-year product warranty





THE BENEFITS OF CLICKFIT EVO



EASY INSTALLATION

All mounting systems have been developed with the installer's convenience in mind.



MAXIMUM TIME SAVINGS

The mounting systems can be installed in just a few steps, which saves time.



LESS RISK

Our mounting systems are extensively tested and meet the strictest safety requirements, protecting against damage and leakage.



MINIMUM NUMBER OF TOOLS REQUIRED

Thanks to the smart techniques and the small number of components, the installer does not need a lot of tools.

ROOF FASTENERS



ClickFit EVO Universal roof hook
1008040



ClickFit EVO Universal roof hook LT
1008040-LT



ClickFit EVO Truss hook
1008045



ClickFit EVO Roof hook Pro
1008041

ACCESSORIES



ClickFit EVO Mounting rail roupler
1008061



ClickFit EVO MLPE Clip
Light Weight
1008067



ClickFit EVO MLPE Clip
heavy weight
1008068



ClickFit EVO Roof hook spacer
1008063



ClickFit EVO Auxiliary set with cable
clip
1008064



ClickFit EVO Self drilling screw
6,3x42mm SW10/T30
1003016 (required for vertical rail
installation)

MOUNTING RAIL



ClickFit EVO Mounting rail

ClickFit EVO Mounting rail 1188 mm	1008131
ClickFit EVO Mounting rail 2338 mm	1008132
ClickFit EVO Mounting rail 3488 mm	1008133
ClickFit EVO Mounting rail 3500 mm	1008007
ClickFit EVO Mounting rail 4638 mm	1008134
ClickFit EVO Mounting rail 5770 mm	1008135

MODULE CLAMP & END CAP



ClickFit EVO Module clamp
universal grey
1008020



ClickFit EVO Module clamp
universal grey black
1008020-B



ClickFit EVO Mounting rail end cap
grey
1008060



ClickFit EVO Mounting rail end cap
black
1008060-B



ClickFit EVO Short end cap without
clamp support black
1008066-B



ClickFit EVO 60 mm Module clamp
black
1008021-B




ClickFit EVO 60 mm End clamp black
1008022-B



BUILDING VALUE FOR SOLAR PROFESSIONALS

Esdec

Londenstraat 16
7418 EE Deventer
Nederland

 +31 850 702 000

 info@esdec.com